

Ride 2

Bingara by ways

Start & finish point: Bingara Post Office
Total distance: 7.2 km
Degree of difficulty: Easy
Bike recommended: Hybrid or Mountain bike
Time: Allow about 1 hour

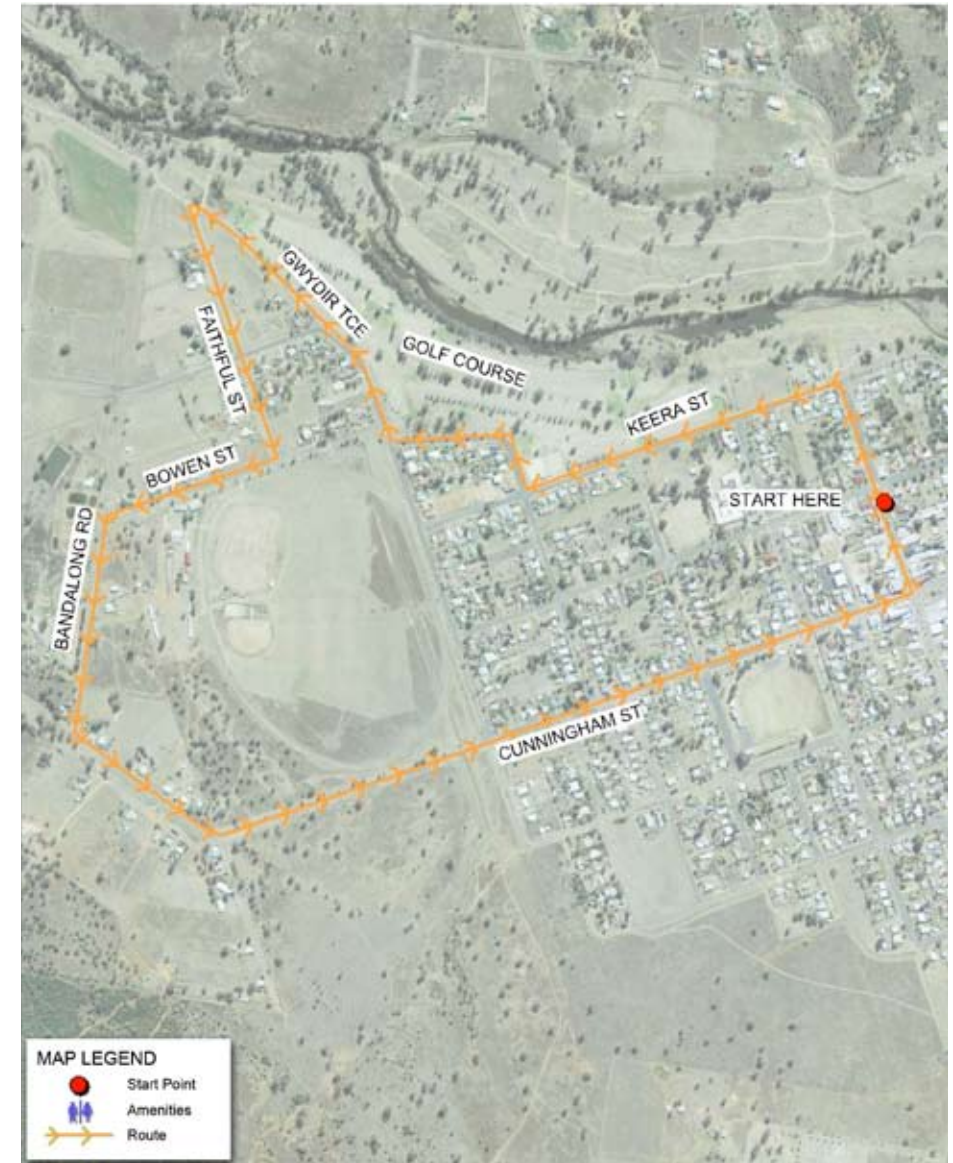
Notes: Short stretch of unsealed road. Amenities block in Cunningham St beside Gwydir Oval sports ground (on the return final leg). Corner store near bowling greens and Club.

Route:

- Continue north down Maitland Street to The Riverside (Junction) Park
- Turn left into Keera Street, riding past the golf course and Bingara Central School
- Turn right into Bombelli Street, past the bowling greens
- Follow road around to the left
- Turn right into Gwydir Terrace and continue straight ahead by golf course, onto unsealed track
- Follow road around to the left into Faithfull Street, continuing up to T intersection facing the showground (crossing Herbert Street)
- Turn right into Bowen Street
- Turn left at the Bingara Anglers Murray Cod Fish Hatchery into Bandalong Road and follow to end
- Turn left into Killarney Gap (Narrabri) Road (this becomes Cunningham Street)
- Proceed straight ahead to Maitland Street
- Turn left into Maitland Street and return to the Post Office.



Ride 2 - Bingara by ways map



© Gwydir Shire Council 2012
© Land Property Information 2012. All Rights Reserved
No part of this map may be reproduced without written permission. Enquiries and end user comments should be directed to:
General Manager, Locked Bag 5, BINGARA NSW 2401.
Disclaimer:
The publisher and/or contributors to this publication accept no responsibility for any injury, loss or damage arising from its use or errors or omissions therein. Council does not guarantee the location of existing boundaries. You must satisfy yourself as to the existence and location of these property boundaries.