

Ride 3

Gwydir River Ride

Start & finish point: Bingara Post Office
Total distance: 5.3 km
Degree of difficulty: Easy
Bike recommended: Hybrid or Mountain bike
Time: Allow about 1 hour

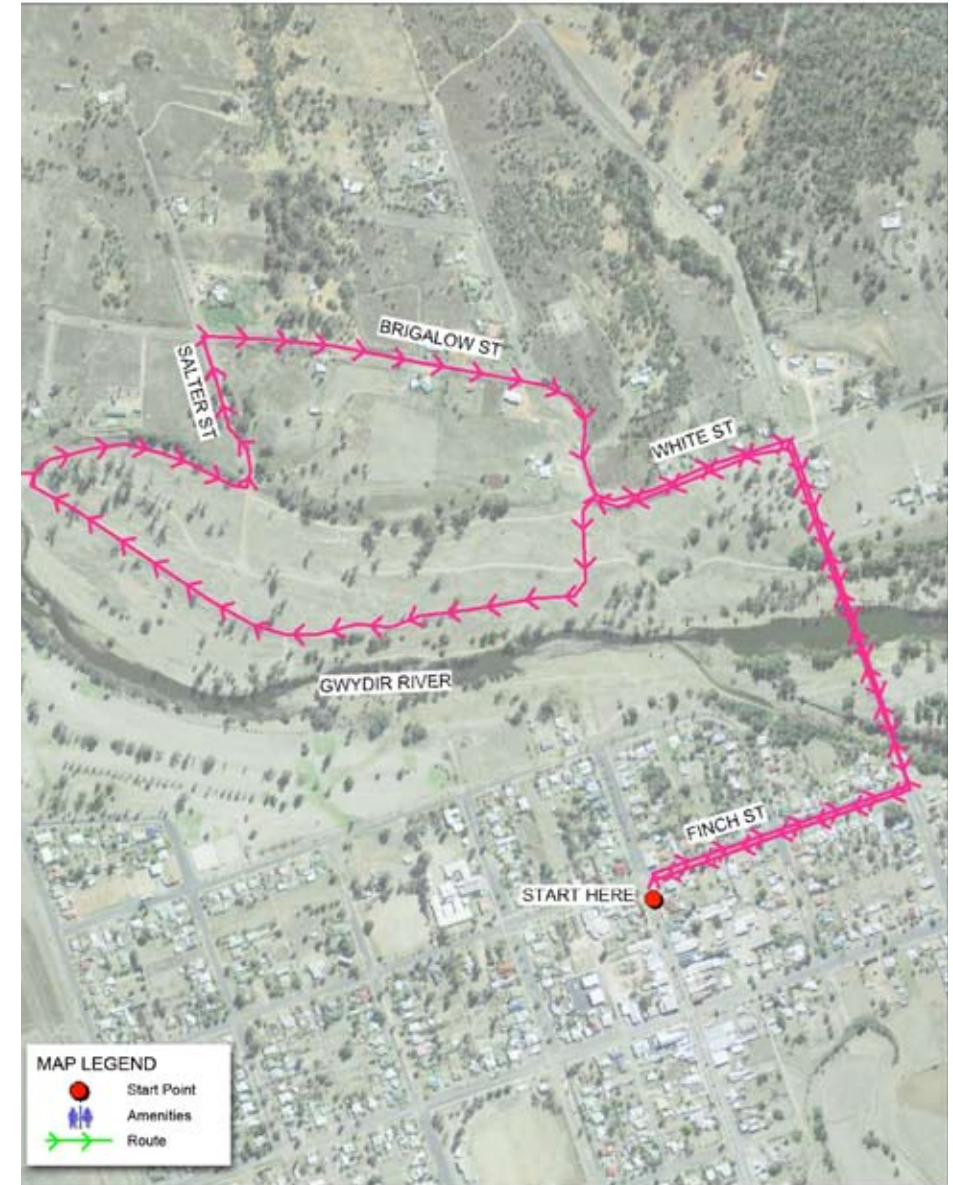
Notes: Some sections are unsealed, river accessible. Amenities block at Cunningham Park between the Bridges.

Route:

- From the Post Office, turn right into Finch Street and ride to the end
- Turn left and ride over both bridges
- Take first left into White Street
- Go left over cattle grid on Scenic Drive
- Head down to the right, following road curving right up from the river
- Proceed alongside the river
- At the end of the walking track turn right and ride up along fence
- Turn left across a cattle grid into Salter Street
- Take the first right into Brigalow Street and then right again to follow the road back to Bingara.



Bike 3 - Gwydir River Ride Map



© Gwydir Shire Council 2012
© Land Property Information 2012. All Rights Reserved
No part of this map may be reproduced without written permission. Enquiries and end user comments should be directed to:
General Manager, Locked Bag 5, BINGARA NSW 2401.
Disclaimer:
The publisher and/or contributors to this publication accept no responsibility for any injury, loss or damage arising from its use or errors or omissions therein. Council does not guarantee the location of existing boundaries. You must satisfy yourself as to the existence and location of these property boundaries.