

Ride 5

Eulourie Circuit

Start & finish point:	The Four Ways, 27 km from Bingara on Narrabri Road
Total distance:	23.5 km
Degree of difficulty:	Medium
Bike recommended:	Hybrid or Mountain bike
Time:	Allow 2 hours

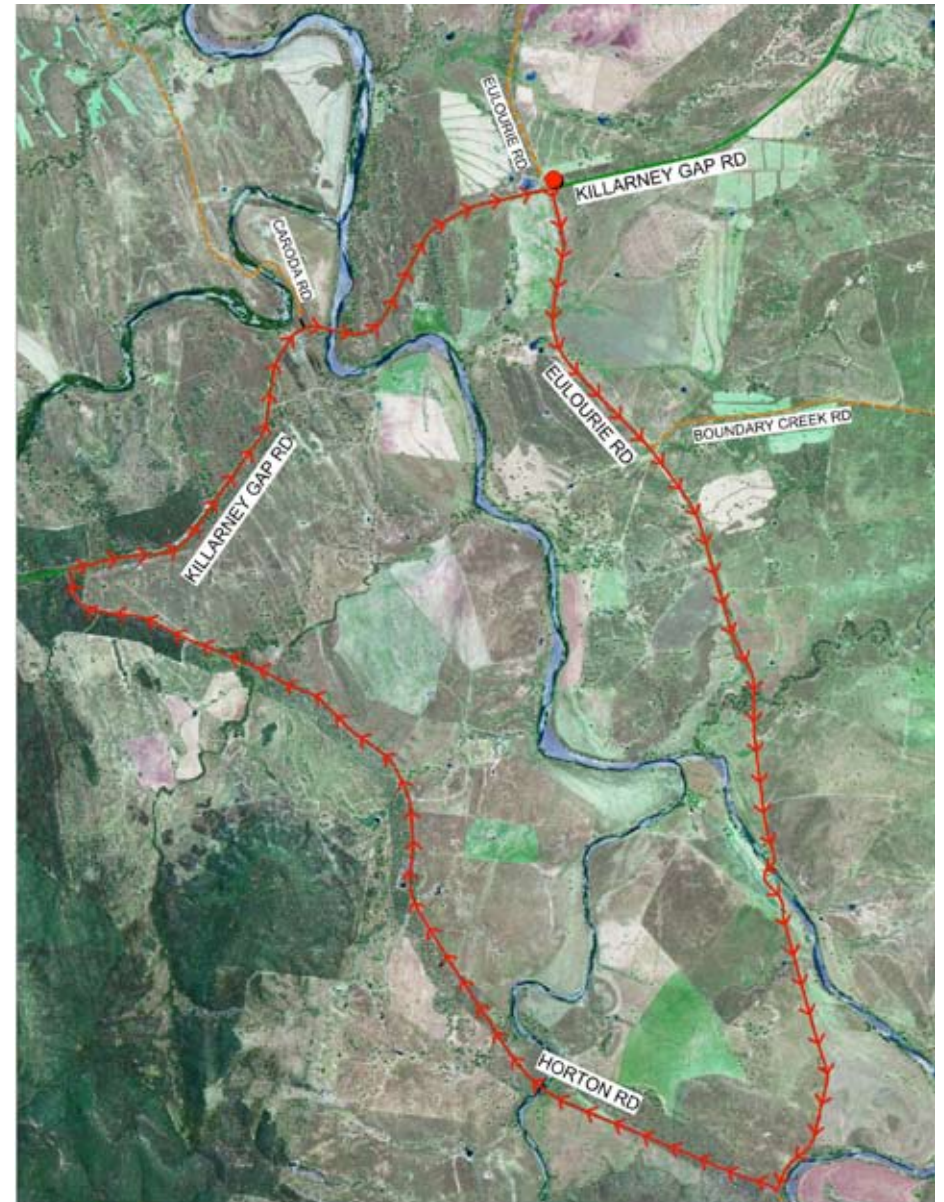
Notes: Around 17 km of unsealed road; cattle grids; causeway (unable to cross in wet conditions); pretty views over Horton Valley. Plenty of parking at the Crossroads.

Route:

- Turn south (left if coming from Bingara) at the Crossroads and ride down Eulourie Road
- Follow road over a causeway
- At the T Intersection turn right into Upper Horton Road, heading west towards Narrabri
- Turn right at the T intersection onto Killarney Gap Road (Narrabri Road) heading east towards Bingara
- Ride approx. 5 kms back to the Crossroads.



Ride 5 - Eulourie Circuit Map



© Gwydir Shire Council 2012
© Land Property Information 2012. All Rights Reserved
No part of this map may be reproduced without written permission. Enquiries and end user comments should be directed to:
General Manager, Locked Bag 5, BINGARA NSW 2104.
Disclaimer:
The publisher of and/or contributors to this publication accept no responsibility for any injury, loss or damage arising from its use or errors or omissions therein. Council does not guarantee the location of existing boundaries. You must satisfy yourself as to the existence and location of these property boundaries.