

Sportsmans Hotel Streetscape

The built-out paving fronting the Council building could be extended to the frontage of the Sportsmans Hotel, allowing al fresco dining which would help activate the main street and complement other outdoor dining on footpaths nearby.

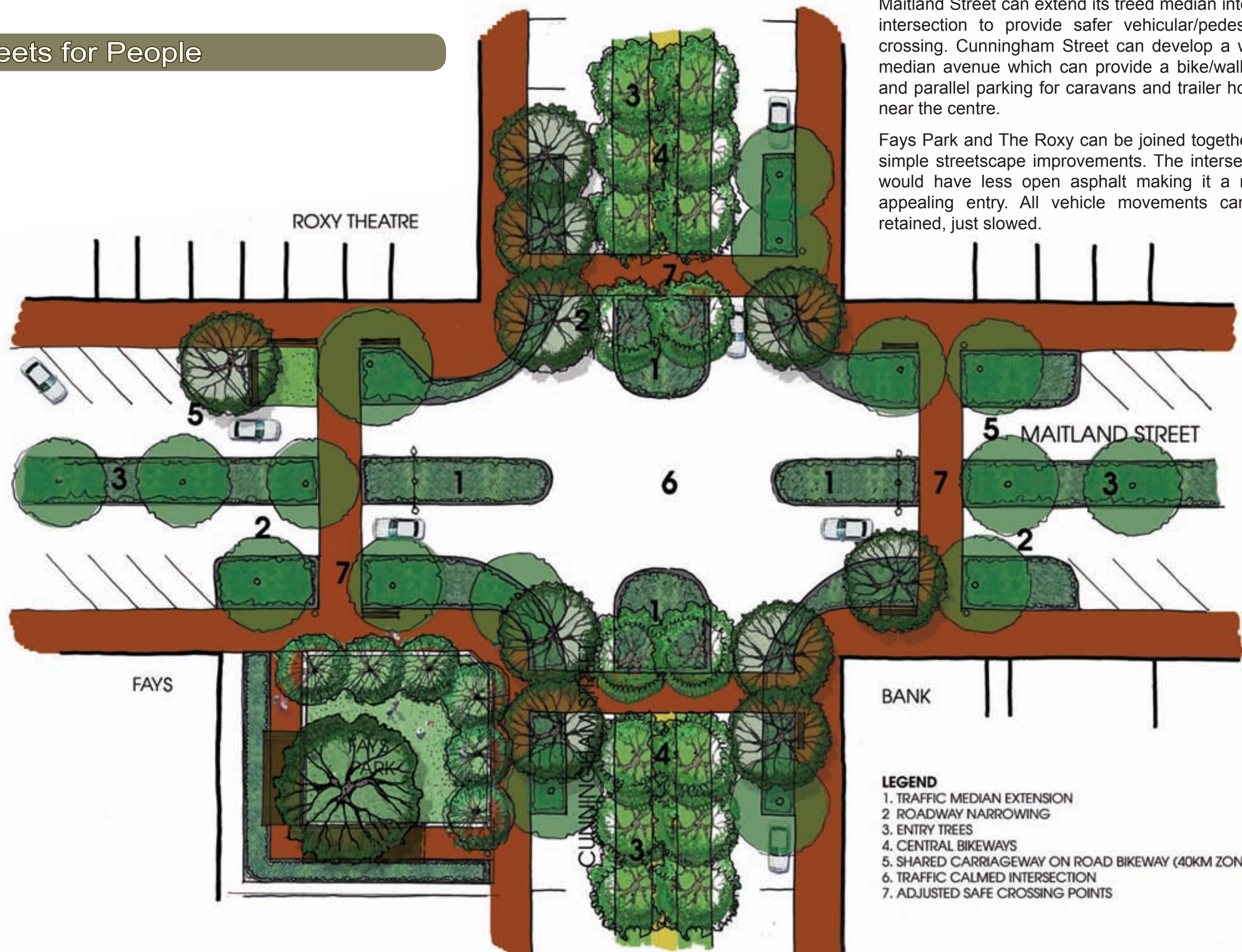
A double row of deciduous shade trees, flush paving with a drainage grate and bollards would be installed to provide an outdoor dining area clear of the walkway.



before

after

Streets for People



Maitland Street can extend its treed median into the intersection to provide safer vehicular/pedestrian crossing. Cunningham Street can develop a wider median avenue which can provide a bike/walkway and parallel parking for caravans and trailer homes near the centre.

Fays Park and The Roxy can be joined together by simple streetscape improvements. The intersection would have less open asphalt making it a more appealing entry. All vehicle movements can be retained, just slowed.

LEGEND

1. TRAFFIC MEDIAN EXTENSION
2. ROADWAY NARROWING
3. ENTRY TREES
4. CENTRAL BIKEWAYS
5. SHARED CARRIAGEWAY ON ROAD BIKEWAY (40KM ZONE)
6. TRAFFIC CALMED INTERSECTION
7. ADJUSTED SAFE CROSSING POINTS

Streets for People

The wide streets will be segmented with dual bikeway/gopherway corridors shaded by new tree corridors. The main street will be traffic calmed, removing heavy vehicles by utilising a bypass which also gives trucks a rest stop. Caravans and mobile homes are a major target visitor for Bingara, and the main through street will be rebuilt with a central shaded median to allow caravans to easily park overnight proximate to the shops.

Medians and treed build outs can be built around the main town centre intersections to reduce the expanse of asphalt, and make safer the vehicular and pedestrian crossing. The traffic calmed intersection of Cleveland in Queensland shows how a main road and a main street can be pedestrianised to create a shady, pleasant destination with all vehicular movements retained.



Opportunities to activate street corners



Cleveland, Queensland



Streetscapes in Cleveland, Queensland

Streets for People

Town Heart Traffic Calming



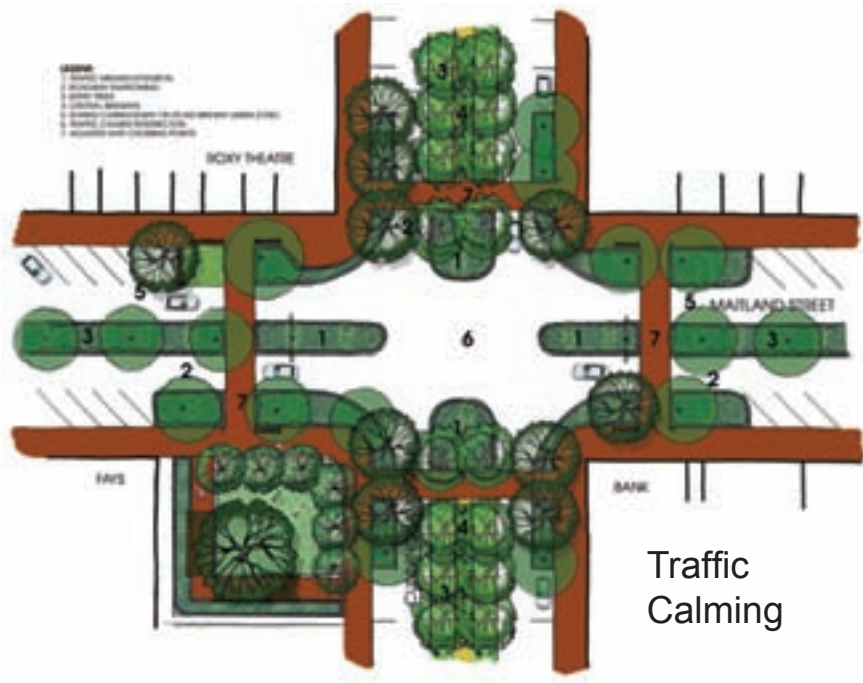
Cunningham and Maitland Streets can be calmed by diverting trucks along a bypass on Heber Street which includes a rest stop for truck drivers, further slowing trucks down through the town. These main streets would have footpath build outs and shade tree plantings which would pedestrianise the wide asphalted corridors and improve amenity for walkers.

Streets for People - Roxy Theatre



The Roxy Theatre is the cultural heart of Bingara. Events such as the opening of the Roxy Cafe in April 2011 show that all the spaces outside of the theatre, including the intersection, can become people places when desired. The streets can be easily closed off to provide a piazza space for hundreds of people to congregate, celebrate and dance.

The Roxy Cafe has been recently refurbished and offers a day-to-day opportunity to activate the intersection area. Minor footpath improvements can assist in bringing activity into the street. Renovating Fays Park will achieve a more usable village green space which can be better utilised for town and Roxy Theatre events and happenings.





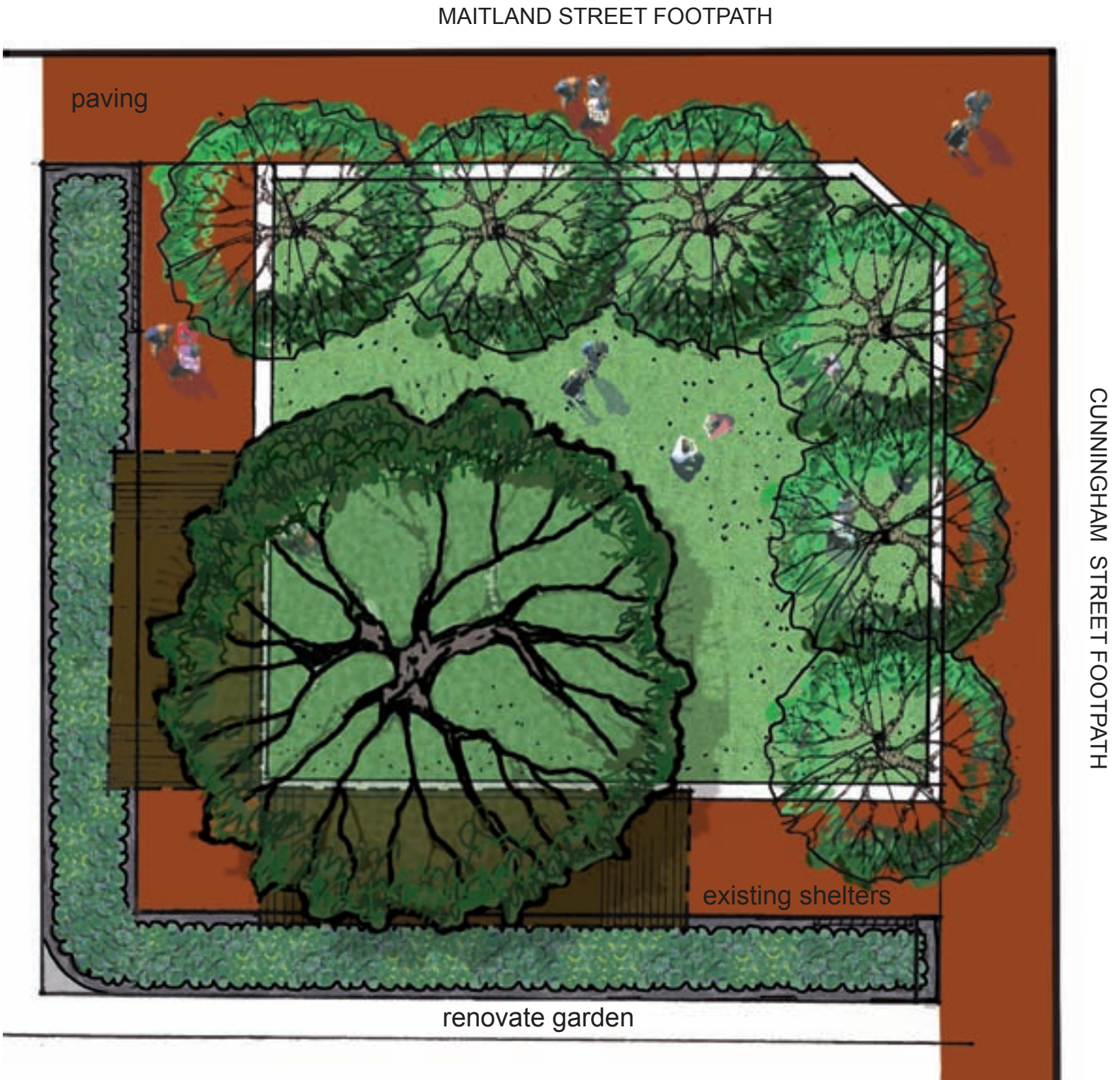
Fays Park



before: a hard and open paved area



after: a green and shaded village green



Fays Park Renovation
Town Centre
Street Concept

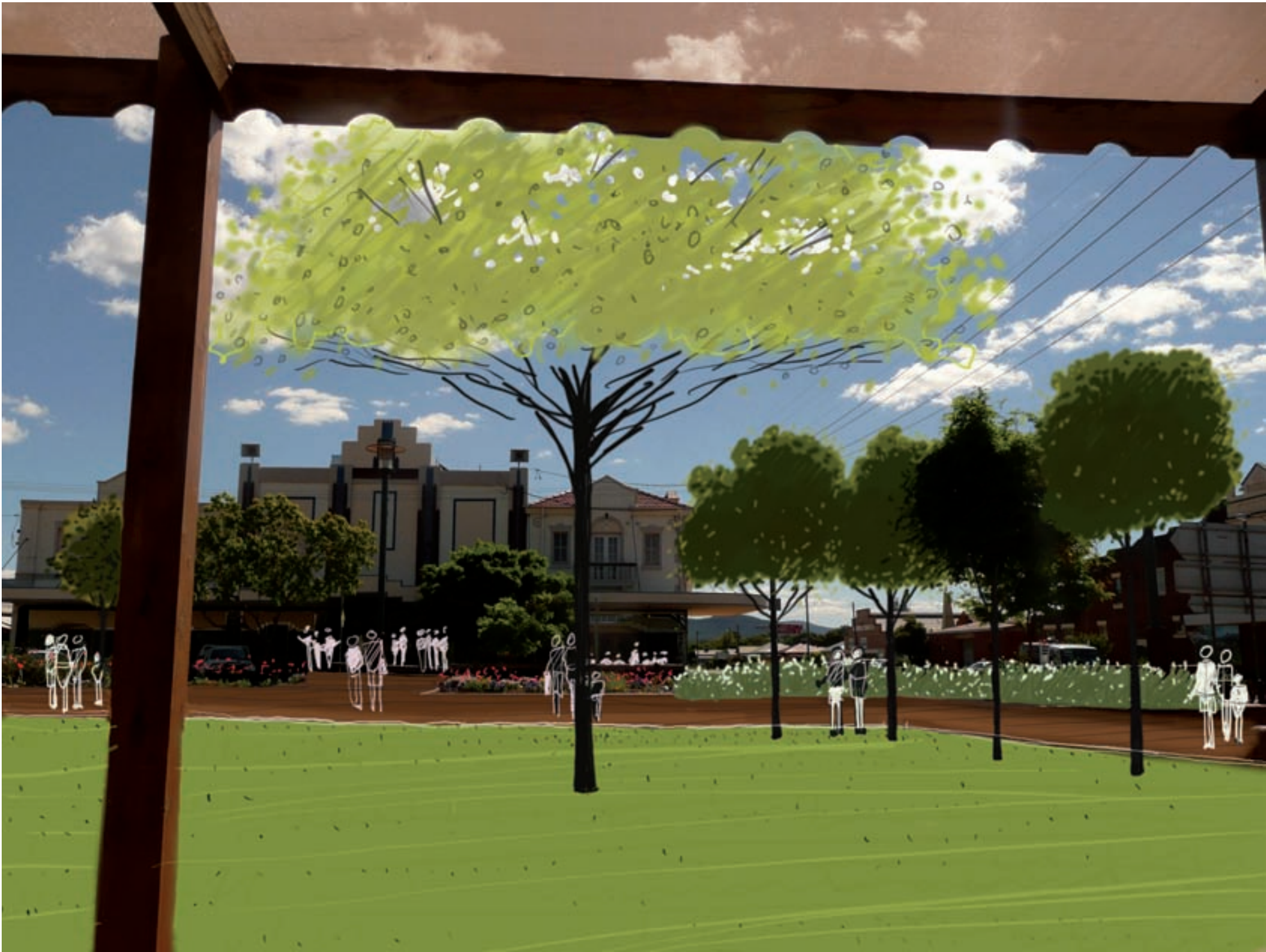
replace existing brick planters and brick
paving with lawn and shade trees

not to scale

Fays Park



before



after

Streets for People

before: Fays Park lacks shade and barriers prevent usage



after: incorporate a wide lawn with ample shade for gathering

